

# *Mid-Derbyshire Motor Club*

*Presents*



## **TWYFORD STAGES**

*Supported by SDE Group, APB Group and CLR Landscapes*

*Saturday 22<sup>nd</sup> October 2022*

### *Supplementary Regulations*



*John Clayton / Matty Daniels – 2019 Winners*  
*Photo courtesy of Kevin Money Photography*



*A qualifying round of:*  
**AEMC Stage Rally Championship**  
**ANEMMC Stage Rally Championship**  
**ANWCC Stage Rally Championship**  
**EMAMC Stage Rally Championship**



## **FOREWORD**

Welcome to the **2022 Mid-Derbyshire Motor Club RACE-KEEPER Twyford Stages Rally**.

Mid Derbyshire Motor Club welcomes Our new sponsor for the event RACE-KEEPER along with support from SDE Group, APB Group and CLR Landscapes, and thank them for their support.

This year we are again supporting the Derbyshire, Leicestershire & Rutland Air Ambulance, we trust and hope you will join us to raise as much money as possible for this worthy cause by giving a little extra when completing your entry form.

We hope you enjoy the event and look forward to seeing you.

## **The Organising Team**

### **ACKNOWLEDGEMENTS**

RACE-KEEPER  
SDE Group  
APB Group  
CLR Landscapes  
Motorsport UK  
Belper Van Hire  
Mathew Atkinson – Rallies.info  
CJ Rallying  
The Forestry Commission  
RLO for Lincolnshire  
All rescue and recovery crews  
All marshals and radio crews  
Residents adjacent to the venue



We fly two regional air ambulances, across the counties of Warwickshire, Northamptonshire, Derbyshire, Leicestershire & Rutland. These two helicopters provide a rapid response to trauma and medical emergencies over an area of 3850 square miles covering many of the UK's major road networks including the M1, M6, M69 and M42. With an average response of just 13 minutes, between them they attend on average 6 missions a day. You may well have seen us in the skies above you.

We've saved thousands of lives in our community. We need your help to save thousands more.

Mid Derbyshire Motor Club Ltd. welcomes new sponsor



**The Ultimate Video and Data Logging System for rally cars, road cars, race cars, race boats, helicopters, aeroplanes, and anything else that goes fast and tears it up!**

The **Race-Keeper HD** video and data logger was developed using our experience in motorsports, driving experiences and beyond. It brings dual stream HD video combined with high-quality GPS data within reach of everyone at the track or on the road.

#### FEATURES

[www.race-keeper.com](http://www.race-keeper.com)

Automatic start stop recording for truly hands off operation.

Small & compact. Fast, secure, & stealthy installation in your vehicle.

Multi-camera 1080p HD video data logger with GPS, accelerometers, & status screen.

All-in-one Dual Road Dash Cam & Track Day Data Logger.

Lightweight only weighing 140g.

True Dual Stream HD video for comprehensive video coverage (track, cockpit, rear).



Race-Keeper UK: m: 07875 490077  
The Old Station, High St. Edwinstowe NG21 9HS

#### Prices

Standard Race-Keeper HD £345

HD with Roll bar mount £475

HD with Intercom Mixer and Roll bar mount  
£650

[www.race-keeper.com](http://www.race-keeper.com)

UK: 07875 490077

All-in-one video data logger is the best, easiest and cheapest way to record and analyse every one of your rally stages. Super Clear dual camera 1080p HD videos with fast GPS data allows easy stage analysis and driver comparison in an all-in-one package.

2 video streams auto synchronized with GPS data for mapping and stage timing in Race-Keeper Comparo software.

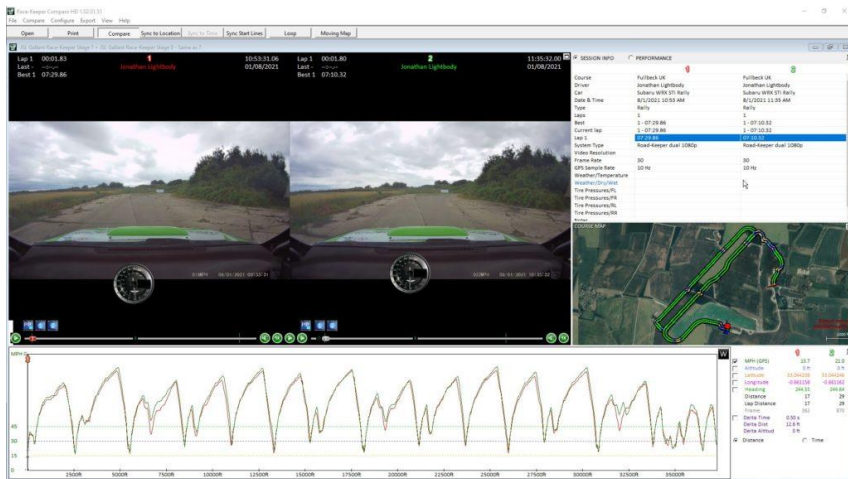
Simple and secure roll bar mount installation, intercom connection and audio mixer for the perfect audio balance, easily create video and data export clips for marketing and social media pages.

<https://www.youtube.com/user/Trivinci>

<https://www.facebook.com/racekeeper>

## Compare stages side by side – see how and where you can improve

Bespoke 'Comparo' software allows 2 videos to be loaded so they can be compared side by side - see where you make or lose time on your stages - or against another competitor's video – and see where your improvements were! [Comparo HD - Race-Keeper](#)



## Dual HD 1080o Camera and Comparo software



## Crystal Clear In-Seat Audio

Hook up the audio to get crystal clear in-seat audio onto your video too with Race-Keeper HD with Intercom connection and roll bar mount.

[Road-Keeper Dual HD with Intercom mixer system and Roll bar mount - Race-Keeper](#)

### **MID-DERBYSHIRE MOTOR CLUB LIMITED**

Mid-Derbyshire Motor Club is a very active group of motorsport enthusiasts. We specialise in road and stage rallying, and we organise, marshal, drive, navigate and talk our way to a great time.

Wherever possible, we like to put on an event every week. We get out onto the roads for Treasure Hunts, Social Rallies and 12-Cars - this all comes highly recommended as there are some excellent lanes around Derbyshire. We also organise indoor activities such as Tabletop Rallies, Quiz Nights, Video Nights, Playstation Challenges and more. Add other events such as Auto-Tests, Karting, Ten Pin Bowling and Paintballing and you can see we are a very busy club. We also organise rounds for both Road Rally and Stage Rally Championships.

Club night is Thursday, and we meet at Lumb Farm country club in Ripley (Marehay) from 9:00pm onwards with a warm Derbyshire welcome to all.

**[www.mid-derbyshire-mc.co.uk](http://www.mid-derbyshire-mc.co.uk)**



Mid-Derbyshire Motor Club presented a cheque for £2000 to the Warwickshire & Northamptonshire and Derbyshire Rutland & Leicestershire Air Ambulance at the Donington historic festival and will be making another donation with thanks to all who enter this year

## SUPPLIMENTARY REGULATIONS

### 1. **Announcement**

Mid-Derbyshire Motor Club Limited will promote and organise an interclub permit Single Venue Stage Rally on Saturday 22<sup>nd</sup> October 2022 at Twyford Wood, near Grantham (Map Ref: 130/946238).

### 2. **Jurisdiction**

The event will be held under:

(i) The General Regulations of Motorsport UK (Incorporating the provisions of the International Sporting Code of the FIA).

(ii) These Supplementary Regulations.

(ii) Any written instructions the promoting club may issue for the event.

### 3. **Sponsors**

The Event is sponsored by **RACE-KEEPER** and **Supported by SDE Group, APB Group and CLR Landscapes Ltd.**

### 4. **Authorisation**

A Motorsport UK Permit has been applied for.

### 5. **Competitor Eligibility**

The event is open to all fully elected members of the organising club and member clubs in the following Regional Associations:

Association of Eastern Motor Clubs

Association of North East Midlands Motor Clubs

Association of North Western Car Clubs

East Midland Association of Motor Clubs

All competitors must hold a valid Motorsport UK competition licence of interclub status or above. Drivers must be Stage rally driver's license. These licences must be produced at documentation.

### 5. (a) **Championships**

The event is a round of the following Championships:

The AEMC Stage Rally Championship 2022 permit No. 40/2022

The ANEMMC Stage rally championship 2022 permit no. 50/2022

The ANWCC stage rally championship 2022 permit No. 29/2022

The EMAMC stage rally championship 2022 permit No. 68/2022

### 6. **Programme**

Scrutineering and documentation will take place at the venue from 15:00 to 18:00 on Friday 21<sup>st</sup> October 2022 and re-open on Saturday 22<sup>nd</sup> at 06:30 to 08:30. Car 0 will start Stage 1 of the event at 09:00. Vehicles may be required to start stages at intervals of less than one minute. Any competitor not signed on 30 minutes before their due start time may be refused a start.

### 7. **Classes**

The events will consist of the following classes:

**Class 0** - 2 wheel drive up to 999cc.

**Class 1** - 2 wheel drive 1000 to 1400cc.

**Class 2** - 2 wheel drive 1401 to 1600cc.

**Class 3** - 2 wheel drive 1601 to 2000cc.

**Class 4** - 2 wheel drive 2001 and over.

**Class 5** - All 4 wheel drive.

**Class 6** - OPEN RALLY NO TYRE RESTRICTIONS NON CHAMPIONSHIP



Turbo assisted cars will have cc increased by the ratio of 1 to 1.7 as per Motorsport UK guidelines.

Rotary engine cars will also receive the same increase.

The organisers reserve the right to amalgamate classes as they see fit.

## 8. Route

The event will consist of 8 stages with approximately 65 miles of stage rallying. The surface is a mixture of smooth / broken concrete and gravel. **Work will be done to further improve the worst surfaces in the build up to the event.**

## 9. Technical

All cars must comply with Motorsport UK vehicle and tyre regulations **(PLEASE SEE SR 17)** for rallies with Special Stages 2022, Cars need not be taxed for the public highway (*R46.1.1*) but are required to have a current MOT (where applicable) and registration documents available for inspection at Scrutineering (*R46.1.2*).

To reduce complaints and preserve the venue for future use the organisers in conjunction with the RLO have found it necessary to impose the following restriction:

**“Any vehicle which constantly backfires may be excluded from the event at the discretion of the Clerk of the Course”. “If any vehicle is modified or fitted with a device that may cause persistent backfiring, it MUST be disabled at all times”.**

Judges of Fact will be appointed to monitor cars that cause loud detonations.

## 10. Awards

Awards will be presented as follows:

1 <sup>st</sup> Overall	-	2 Souvenir Awards
2 <sup>nd</sup> Overall	-	2 Souvenir Awards
3 <sup>rd</sup> Overall	-	2 Souvenir Awards
1 <sup>st</sup> , 2 <sup>nd</sup> and 3 <sup>rd</sup> in Class 0 to 5 each	-	2 Souvenir Awards
1 <sup>st</sup> MDMC Driver and Navigator	-	Souvenir Awards each
Highest placed lady driver and navigator	-	Souvenir Awards each

Competitors may not win more than one award. To be eligible for the MDMC award, competitors must be members prior to 31<sup>st</sup> January 2022. Awards will be presented at the venue as soon as possible after the results have been declared final. Other awards may be presented at the organisers' discretion.

**No Awards will be given for the open class 6**

## 11. Entries

The entry opens on Thursday 22<sup>nd</sup> September at 20:00 and closes finally on Wednesday 19<sup>th</sup> October 2022 at 9AM. (Seeding will be done on Sunday 16<sup>th</sup> October 2022.) The entry fee is £295.00 if received prior to or on the 8<sup>th</sup> October 2022 which includes a £5 donation to the DLRAA air ambulance, any entries received after this date the entry fee will be £310.00. All entries must be made on the official entry form and be accompanied by the appropriate fee in accordance with D12.1 to D12.1.4 and D12.2, The maximum number of entries for the event is 80. The minimum is 40. The maximum for each class is unlimited. The minimum for each class is 5. Entries will be accepted in order of fully completed entry forms received.

**Seeding Note.** Event seeding will be determined by the organisers using data provided on the entry form and other sources. Neither correspondence nor discussion will be entered into regarding seeding. Entry fees will be refunded IN Full providing written notification of withdrawal is received not later than 72 hours before the start of the event. After this time an admin fee of £10.00 will be taken. Entries for the event should be sent to:

**The Entries Secretary**  
**Claire Simms**  
**6 Penfold Way, Morton, Derbyshire. DE55 6HS**

**Tel 01773 875138 Not after 9PM**

**Email: [entries@mid-derbyshiremc.co.uk](mailto:entries@mid-derbyshiremc.co.uk)**

## 12. Officials

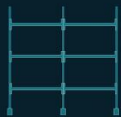
Clerk of the course:	Lee Burgess Tel: 07971 673222
Deputy Clerks of the Course:	Tom Murphy
Secretary of the Meeting:	Ken Worf
Entries Secretary	Claire Simms
Safety Officer:	Reg Walker
Chief Timekeeper:	TBA
Scrutineers:	Steve Ford
Environmental Scrutineer:	TBA
MSA Steward:	TBA
Club Stewards:	Brian Commons & Phil Foster
Results:	Matthew Atkinson Rallies.info
Chief Marshals:	Kev Murphy 46 Loughborough Rd Bunny Nottingham N11 6QD Tel. 01159214830

**PLEASE DO NOT CONTACT OFFICIALS AFTER 9PM**





## OUR SERVICES



STORAGE SOLUTIONS



RACKING INSPECTIONS



ELECTRICAL



INTERIORS



3D VISUALISATIONS



ENERGY SOLUTIONS



Since its formation in 1992, SDE Group have built a reputation working across a variety of sectors and engaging with different brands on a national basis. We specialise in providing a number of services to design and deliver within industrial, commercial and retail environments - successfully delivering projects through our multi discipline knowledge.

Our belief at SDE Group is that our job is not to only provide solutions to our client's immediate requirements, but to provide solutions that will help to secure the future success of their businesses. The diversity of our long-term clients are testament that we continually practice a client-focused approach. If you would like more information please contact us so that we can discuss your requirements:

[info@sde-group.co.uk](mailto:info@sde-group.co.uk)  
T: +44 (0) 1246 827722

**www.belperselfstorage.com**

**SELF STORAGE FOR HOME AND BUSINESS**

**GOODS RD, BELPER, DERBYS DE56 1UU • 01773 829456**



## ***Slicks Tyres***

**Andrew Knott**

**Evening Tel. No: 0114 247 0485**

**andrewjohnknott@hotmail.com**

***Supplier of quality new & used tyres.  
Available to order. Attends most local events***

Please Contact Andrew prior to the event for tyres

**13. Judges**

All named Officials are Judges of Fact to observe and report on any breach of regulations. Additional Judges of Fact may be named on the official notice board.

**14. Route Documentation**

Entrants will be supplied with stage maps and time cards at signing on. These documents will provide all the information required to enable competitors to comply with R33

## 15. Protests

These must be lodged in accordance with C5.1 to C5.7 and C6.1 to C13.1 within the stated time limit.

### 15. (a) Penalties

Marking and penalties will be as printed in R32. Apply as written, except as modified below:

Completing less than the required laps:	<b>Stage Maximum</b>
Completing more than the required laps:	<b>Time taken</b>
Reversing back to, or turning round and returning to a split, reversing after passing the stop line:	<b>Exclusion</b>
Failing to wear a crash helmet, seat belt or smoking, not being seated in the car whilst in motion on a special stage:	<b>Exclusion</b>
Misuse of emergency aid systems: i.e. SOS/OK/RED FLAG:	<b>Exclusion</b>
Leaving the venue after documentation and before completion of, or retirement from, the event:	<b>Exclusion</b>
Speeding in the service area/access roads to and from service area:	<b>Exclusion</b>
Vehicle backfiring excessively : 1 <sup>st</sup> time Warning : 2 <sup>nd</sup> time	<b>Exclusion</b>
Cars striking stage boards, bales, cones, tyres etc. which define splits, merges and chicanes will be penalised:	<b>30 seconds per incident</b>
Competitors reporting to stage start control more than 10 minutes after their due time will be deemed not to have visited that control.	

### 15.(b) Additional Penalties

The causing of any obstruction, undue noise or nuisance on the venue and land surrounding the venue, access roads or the Public Highway before or during the event by any competitor, service crew or personnel associated with any competitor may result in exclusion of the associated competitor.

### 15.(c) Miscellaneous

All General Regulations of the MSA apply except for the following, which are modified as stated:

(i) R30 Time controls will open 5 minutes before the due time of the first car and close 5 minutes after the due time of the last car plus the penalty free lateness of 10 Minutes.

(ii) R40 to be classified as a finisher competitors must report to two thirds of the controls listed in the road book and to report to the final control within the maximum lateness permitted, in the car in which they started the event.

(iii) Broken or damaged cars will only be recovered by official recovery vehicles and then only at the discretion of the Clerk of the Course.

(iv) Cars should not be left unattended in a stage without first notifying the nearest radio. Drivers should return to the vehicle in time to facilitate its recovery.



# Clubman Motorsport

[www.clubmanmotorsport.com](http://www.clubmanmotorsport.com)

Clubman Motorsport are proud to sponsor the EMAMC Rally Championships.

Located adjacent to Melbourne Airfield, offering:

- Approved service agent for Lifeline, SPA Design & PD Extinguishers
- Showroom featuring FHR's, Helmets, Lighting, Seats, Racewear, Harnesses, Tools & Other Preparation Essentials.

Our website only contains a fraction of what we stock. For personal advice from a fellow competitor and for exclusive EMAMC championship offers, please call Rob on 07598 294750 or email [Rob@ClubmanMotorsport.com](mailto:Rob@ClubmanMotorsport.com)







# ASSOCIATION OF NORTH-WESTERN CAR CLUBS

## www.anwcc.co.uk

### REGIONAL CHAMPIONSHIPS FOR CLUB COMPETITORS

(open to members of all ANWCC member clubs)

**LOGON TO THE WEBSITE FOR FULL INFORMATION**

SUPPORTED BY

**mintex**  
racing



**motordrive**  
SERVICE | SAFETY | STYLE

**RED FOX**  
PROMOTIONS  
www.redfoxpromo.co.uk

**SBARDUN**  
Car Parts & Motorsport Accessories

**Slicks**

**FUCHS TITAN**  
RACE

[Home](#) - [Latest News](#)



[Calendar of Events](#) - [Awards Presentation Update](#)




[The Alpha Concrete ANEMMC Stage Rally  
Championship 2022](#)

<a href="#">Date</a>	<a href="#">Name of Event</a>	<a href="#">Venue</a>	<a href="#">Event Web-Site</a>
Sun 13th March	Donington Rally	Donington Race Circuit	<a href="#">Donington Rally</a>
Sun 3rd April	Alan Healy Memorial Rally	Cadwell Park Race Circuit	<a href="#">Alan Healy Memorial Rally</a>
Sun 10th April	Lookout Stages Rally	Melbourne Airfield	<a href="#">Lookout Stages Rally</a>
Sun 12th June	Flying Fortress Stages Rally	Grafton Underwood	<a href="#">Flying Fortress Stages Rally</a>
Sun 24th July	Twyford Wood Stages Rally	Twyford Wood	<a href="#">Twyford Wood Stages Rally</a>
Sun 7th August	Phoenix Stages Rally	Fulbeck Airfield	<a href="#">Phoenix Stages Rally</a>
Sun 28th August	Rainworth Skoda Stages Rally	Leconfield Airfield	<a href="#">Rainworth Skoda Rally</a>
Sun 11th September	Vale of York Stages Rally	Melbourne Airfield	<a href="#">Vale of York Stages Rally</a>
Sun 6th November	Malton Forest Rally	Yorkshire Forest	<a href="#">Malton Forest Rally</a>
Sun 20th November	NHMC Cadwell Park Stages	Cadwell Park Race Circuit	<a href="#">NHMC Cadwell Park Stages</a>

**10 rounds with best 8  
scores to count**

# 2022 STAGE RALLY CHAMPIONSHIP

**Promoted by the Associations of Eastern  
and South Eastern Motor Clubs**

 **Marsh** | **Bluefin**Sport

## RallyGuard

Specialist motorsport insurance  
designed for clubs to cover drivers  
needing Third Party Road Traffic Act  
liabilities for road sections between  
stages or during rally events.

[bluefinsport.co.uk/motorsport](https://bluefinsport.co.uk/motorsport)



This is a marketing communication.

Bluefin Sport is a trading name of Marsh Ltd. Marsh Ltd is authorised and regulated by the Financial Conduct Authority for General Insurance Distribution and Credit Broking (Firm Reference No. 307511). Copyright 2022.

A business of Marsh McLennan



## **16. Timing**

This is a Target Timed event. Main Time Controls (MTC) will be located prior to the start of stage 1 and after the finish of the final stage. Car 0 Due time at MTC1 is 08:57. Competitor MTC1 times will be issued at signing on. Competitors may be required to reduce any lateness in accordance with R32.1.1 to R32.1.3 In the event of any retirements competitors will be required to close gaps. Maximum permitted lateness R31.2.5 and the penalty free lateness R31.2.6 for the event is **10 minutes**.

### **16.(a)Timing**

The start procedure will be controlled by automatic timing equipment utilising clock operated traffic light sequence and jump start beams. The traffic light start system procedure will be posted on the official notice board at rally HQ. The organisers reserve the right to change to the manual start system, referred to in R25.7, should the automatic system fail. Please note there will be no 30 second to go advance warning issued with either start procedure. Competitor MTC1 times will be posted at Rally HQ.

## **17. Permitted Wheels and Tyres**

Only Wheels and tyres complying with current MSA guidelines shall be permitted R48.5

**AGAIN THIS YEAR WE ARE STIPULATING A KNOBBLY TYPE ONLY EVENT FOR THE ASSOCIATION CHAMPIONSHIPS. THE DAMAGE TO THE COMPETING VEHICLES INCLUDING RIMS, SUSPENSION AND BODYWORK WAS A LOT LESS THAN IN PREVIOUS YEARS.**

**WE ARE ALSO HAVING AN OPEN CLASS WHERE TYRES ARE FREE SO THOSE WANTING TO COMPETE ON SLICKS OR ANY OTHER TYRES MAY STILL COMPETE AT THE EVENT BUT WILL NOT BE IN THE CHAMPIONSHIP CLASSES (NO AWARDS WILL BE GIVEN OUT FOR THIS CLASS).**

## **18. Official Notice Board**

The event notice board will be sited within the Rally HQ and display notices through the event that when signed by an official of the event will have the same jurisdiction as these SR's.

## **19. Stage Safety**

In extreme circumstances and in the interests of safety both of the competitors and marshals, a RED FLAG system will be in operation on all stages in accordance with R25.6.3-25.6.7 and R24.4.4, R24.4.5 and R25.6.5.

## **20. Venue**

Access to the venue is only as instructed in the Final Instructions. Fuel and water are **NOT** available on the venue please ensure you have sufficient for your own needs. The use of motorcycles/mopeds/quads or any motorised scooters will not be allowed at any time on any part of the venue.

Refreshments and toilets will be available on site. There is no facility to dispose of any rubbish at the venue so please take your litter home.

## **21. Servicing**

Service may not be available after each stage.

Servicing will only be permitted in an area designated by the organisers. The behaviour of the Service Crew is the responsibility of the competitors. Due to the space limitations only 1 service vehicle per competing car will be allowed in the service area.

**All non essential vehicles and empty trailers must be parked in the designated parking areas, only essential rally support vehicles and rally car in the service area please! (The organisers will not be held responsible for any damage, as a result of an improperly parked vehicle).**

**The Twyford Wood Stages Rally will be open to spectators please be advised that parking will NOT be permitted on the road outside the venue, this will be police enforced, Any person not signed on as a marshal, competitor or organisers and officials will be classed as a spectator and their cars will be allowed onto the venue but MUST BE parked in the spectator car park this rule which will be checked by the officials and 30 second penalties per vehicle will be imposed on the crew that they are attending the venue with.**

## **22. Identification**

Competitors will be identified by competition numbers J4 and R6.1.3.b to R6.1.6 Competition numbers will be provided at the venue and must be fixed to each door prior to Scrutineering. In addition, sponsors decals, if supplied by the organisers must be displayed in a prominent position, ideally on each front door of the competing vehicle.

## **23. Unforeseen Circumstances**

The organisers may delete or modify any part of the course of the competition, and if the event is stopped before completion, distribute the awards at their discretion. Should controversy arise the organisers reserve the right (force majeure notwithstanding) to cancel a stage from the results if they deem it fairer to do so.

## **24. Damage Declaration**

All competitors will be required to complete and sign a damage declaration at the finish of the competition; giving details of any incident they may have been involved in causing damage to persons or property in accordance with R40.1.4. Failure to return this form within 72 hours may be penalised by a fine of up to £100.00.

## **25. Final Instructions**

Final Instructions will be emailed to the nominated person no later than the Wednesday of the week of the event.

**26. Results**

Results will be made provisional as soon as possible after the finish of the last stage and if no protests have been received within 30 minutes, will be made final. All awards will be presented at the venue.

**27. Overnight Camping**

Overnight camping will be allowed, however due to an instruction from the Forestry Commission there will be a small charge of £10.00 per crew, payable with entry. (This charge is set by the Forestry).

**28. Marshals**

To ensure the smooth running of this event we require a large number of marshals, anyone willing to help should contact the **CHIEF MARSHALS.**

Kev Murphy  
46 Loughborough Rd  
Bunny  
Nottingham  
N11 6QD

Tel. 01159214830

Email [Twyfordchiefmarshal@mid-derbyshiremc.co.uk](mailto:Twyfordchiefmarshal@mid-derbyshiremc.co.uk)

**CLR Landscapes** Will be providing cash prizes for the Marshal's draw and MDMC will also be providing a hot Sandwich at Lunchtime



**29. Additional Information**

The events official photographers/videographers are:

**Kevin Money 07779235972**  
**Mad Video 01469 561281**